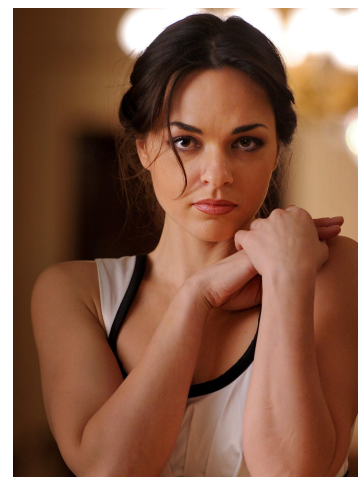


Nechaeva's recent and future appearances include debut at the stage of Israeli Opera Tel Aviv in the title role in *Aida* and return to La Monnaie Brussels as Lisa in *The Queen of Spades*, next to her roles in the new productions of *Mazeppa*, *Aida*, *Elsa in Lohengrin* with Bolshoi Theatre Moscow, debut at the stage of Royal Danish Opera and Teatro Regio, Torino as *Aida*.

As a soloist of the Bolshoi Theatre Moscow, Nechaeva can be seen this season in the title role in Tchaikovsky's *Iolanta*, *Manon* in Puccini's *Manon Lescaut*, *Mimi* in *La bohème*, *Yaroslavna* in *Prince Igor*, *Micaela* in *Carmen*, *Lisa* in *Pique Dame* among others.

Her recent engagements include such roles as *Tatiana* in *Eugene Onegin* for Seiji Ozawa Matsumoto Festival, *Liza* in *Pique Dame* at the Teatro San Carlo di Napoli, *Tatiana* in *Eugene Onegin* with Wielki Theatre Warsaw, *Maria* in *Mazeppa* at the Philharmonie de Paris on tour with the Bolshoi Theatre*, *Rusalka* at Sydney Opera Australia*, *Manon* in *Manon Lescaut* on the stage of Staatsoper Berlin and Mikhailovsky Theatre St Petersburg, *Tatiana* in *Eugene Onegin* with Festival d'Aix en Provence, Savonlinna Opera Festival, *Lisa* in *Pique Dame* at the Stanislavsky Moscow and the Bolshoi Theatre Moscow, the title role in *Iolanta* for Savonlinna Opera Festival, *Polina* in *The Gambler* for Opera Vlaanderen, soprano part in Britten's *War Requiem* at Staatsoper Berlin with maestro Pappano. [* - Cancelled]

Further past engagements include *Liu* in *Turandot*, *Yaroslavna* in *Prince Igor*, *Élisabeth de Valois* in *Don Carlo* and *Nastasya* in *The Enchantress* at the Bolshoi Theatre Moscow, *Nedda* in *Pagliacci*, *Katya Kabanova*, Dvorak's *Rusalka* for Mikhailovsky Theatre St Petersburg, *Elizabeth* in *Tannhäuser* at Freiburg, *Zemfira* in *Aleko* and *Francesca* in *Francesca da Rimini* at La Monnaie, Brussels.



CONTACT

Valeriy Serkin
(Vienna Office)

valeriy@tact4art.com
+43 699 12 18 22 64

...

"Anna Nechaeva's soprano is beautifully regulated, its dark chocolate colour and shimmering power coming through particularly in the middle to upper range."
- Hugo Shirley, Bachtrack

